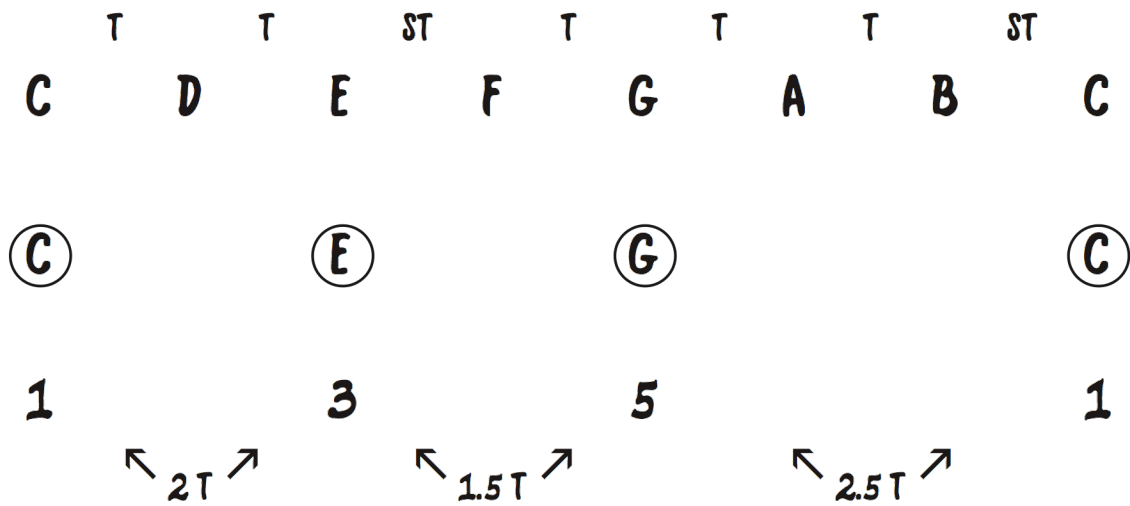
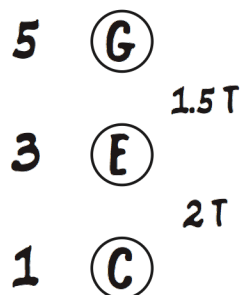


# Constructing a Major Triad

A Major Triad is constructed from the 1st, 3rd and 5th notes of the Major scale. If we analyse the intervals we can see that there is a 2 tone gap between 1 and 3 and a 1.5 tone gap between 3 and 5. This knowledge helps us to quickly and easily build a Major Triad from any starting note.



## C MAJOR TRIAD



Now practice this using different major scales/key signatures/starting notes. Notice how they always sound the same, whatever key/scale/starting note you use.